

ADMIN:

Park entry

- 1 Block west of Kennedy Drive
- Circle Drive traffic
 - One Way
 - Counter Clockwise

Parking

- Lot
- Field
- Overflow east of park in shopping center

Restrooms

- Perry Park Pavilion

Team Tent Area

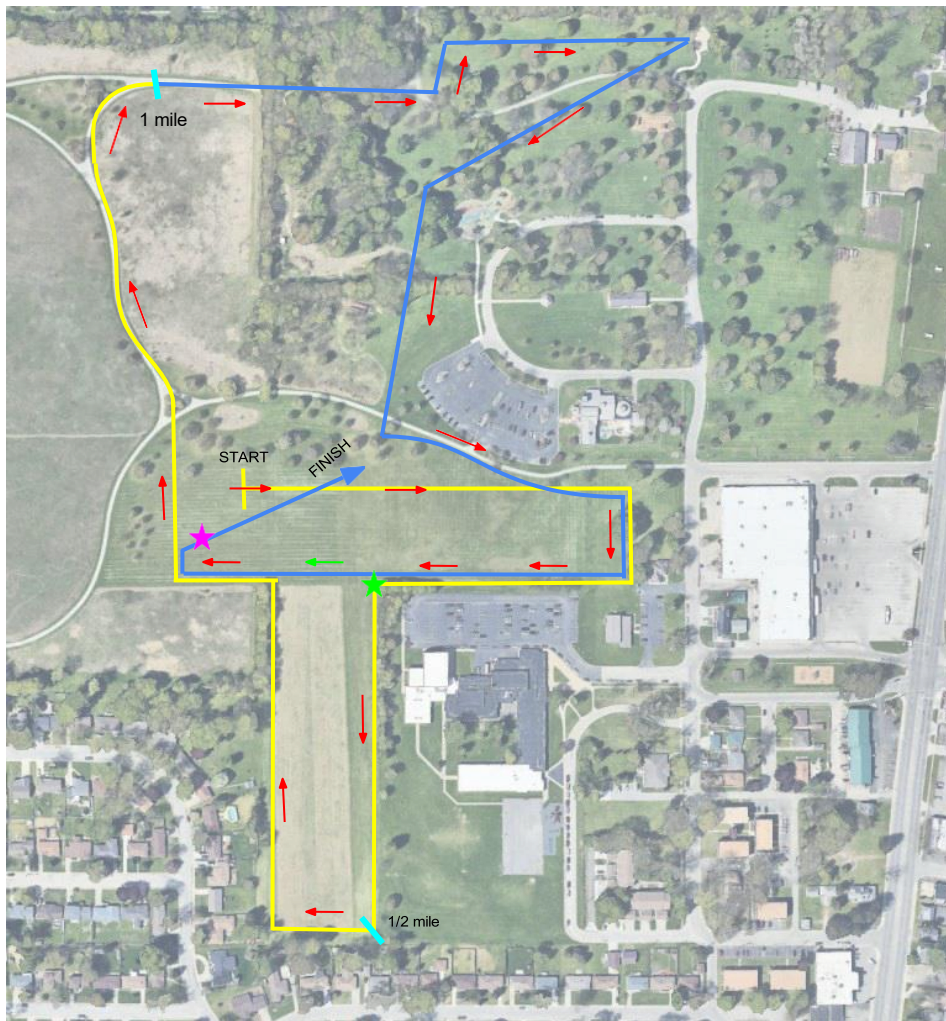
- North of start / finish areas
- South of path

Check-in / Concessions / Trainers

- South of parking lot


Coach / Volunteer Meeting


- ★ Pavilion 0815

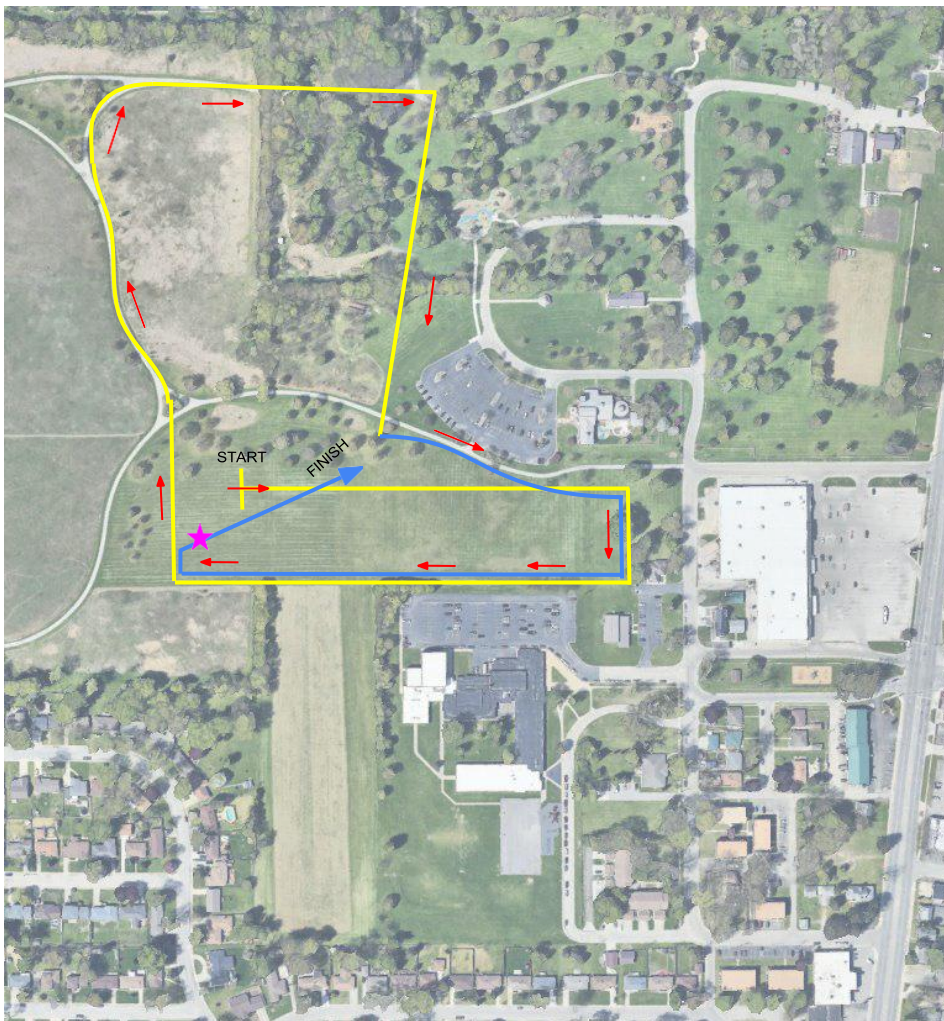


2 Mile Race:

-  Mile 1
-  Mile 2

-  Mile 1 (Lap 1): Turn Left
Mile 2 (Lap 2): Straight

-  Mile 1 (Lap 1):
Continue Straight
Finish:
Right hand turn to final stretch



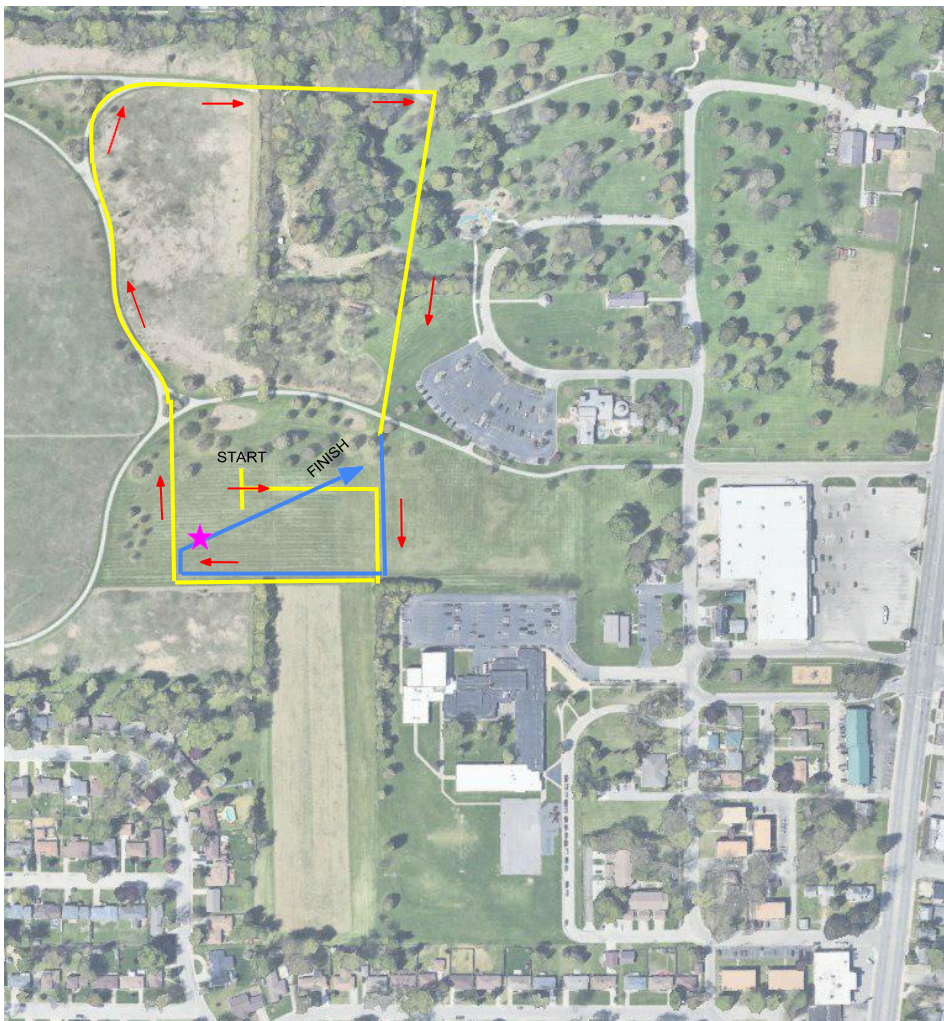
1.45 Mile Race:

Mile 1 (Lap 1):

Continue Straight

Finish:

Right hand turn to final stretch



1 Mile Race:

Lap 1:

Continue Straight

Finish:

Right hand turn to final stretch